

LEGEND:

- SEWER ACCESS CHAMBER
- POWER POLE W/ TRANSFORMER
- POWER POLE
- WATER METER
- GRATED KERB INLET PIT
- COMMUNICATIONS PIT
- UNDERGROUND DRAINAGE PIPE
- ABOVEGROUND ELECTRICAL LINE
- SEWER - DBVD TRACED
- WATER - DBVD TRACED

- (A) EASEMENT FOR ACCESS & WATER SUPPLY 3.05 WDE (DP 513334)
(B) EASEMENT FOR SEWERAGE PIPEPILE & WATER 2.45 WDE (DP 593512)
(C) EASEMENT FOR WATER SUPPLY & ACCESS 3.05 WDE (DP 542630)

NOTE:

THIS DETAIL SURVEY IS NOT A "LAND SURVEY" AS DEFINED BY THE SURVEYING AND SPATIAL INFORMATION ACT, 2002. IF ANY CONSTRUCTION OR DESIGN WORK WHICH RELIES ON CRITICAL SETBACKS FROM THE STREET OR BOUNDARIES IS PLANNED, IT WOULD BE IMPERATIVE TO CARRY OUT FURTHER SURVEY WORK TO DETERMINE THE BOUNDARY DIMENSIONS.

THE POSITION OF THE BOUNDARIES HAVE BEEN CALCULATED FROM THE SURVEY DEFINITION SHOWN ON DP 593512.

IF FURTHER DEVELOPMENT IS CONTEMPLATED ON OR NEAR THE BOUNDARIES THEN SURVEY MARKS SHOULD BE PLACED AND THE POSITION OF IMPROVEMENTS VERIFIED.

WE HAVE NOT INSPECTED THE TITLE DEEDS OR CERTIFICATE OF TITLE AND ACCORDINGLY CANNOT REPORT ON THE EXISTENCE OF ANY EASEMENTS, RESTRICTIONS OR POSITIVE COVENANTS AFFECTING THE SUBJECT LAND, APART FROM THOSE SHOWN ON OUR RECORD COPY OF THE PLAN.

BEARINGS SHOWN RELATE TO MGA NORTH.

ORIGIN OF AUSTRALIAN HEIGHT DATUM WAS FROM PM 15574 RL 9.764 AS OBTAINED FROM SCMS 15 AUGUST 2017.

CONTOURS SHOWN DEPICT THE TOPOGRAPHY, EXCEPT AT SPOT LEVELS SHOWN, THEY DO NOT REPRESENT THE EXACT LEVEL AT ANY PARTICULAR POINT.

DO NOT SCALE OFF THIS PLAN. RELATIONSHIPS OF IMPROVEMENTS TO BOUNDARIES IS DIAGRAMMATIC ONLY. WHERE CLEARANCES ARE CRITICAL THEY SHOULD BE CONFIRMED BY A FURTHER BOUNDARY SURVEY.

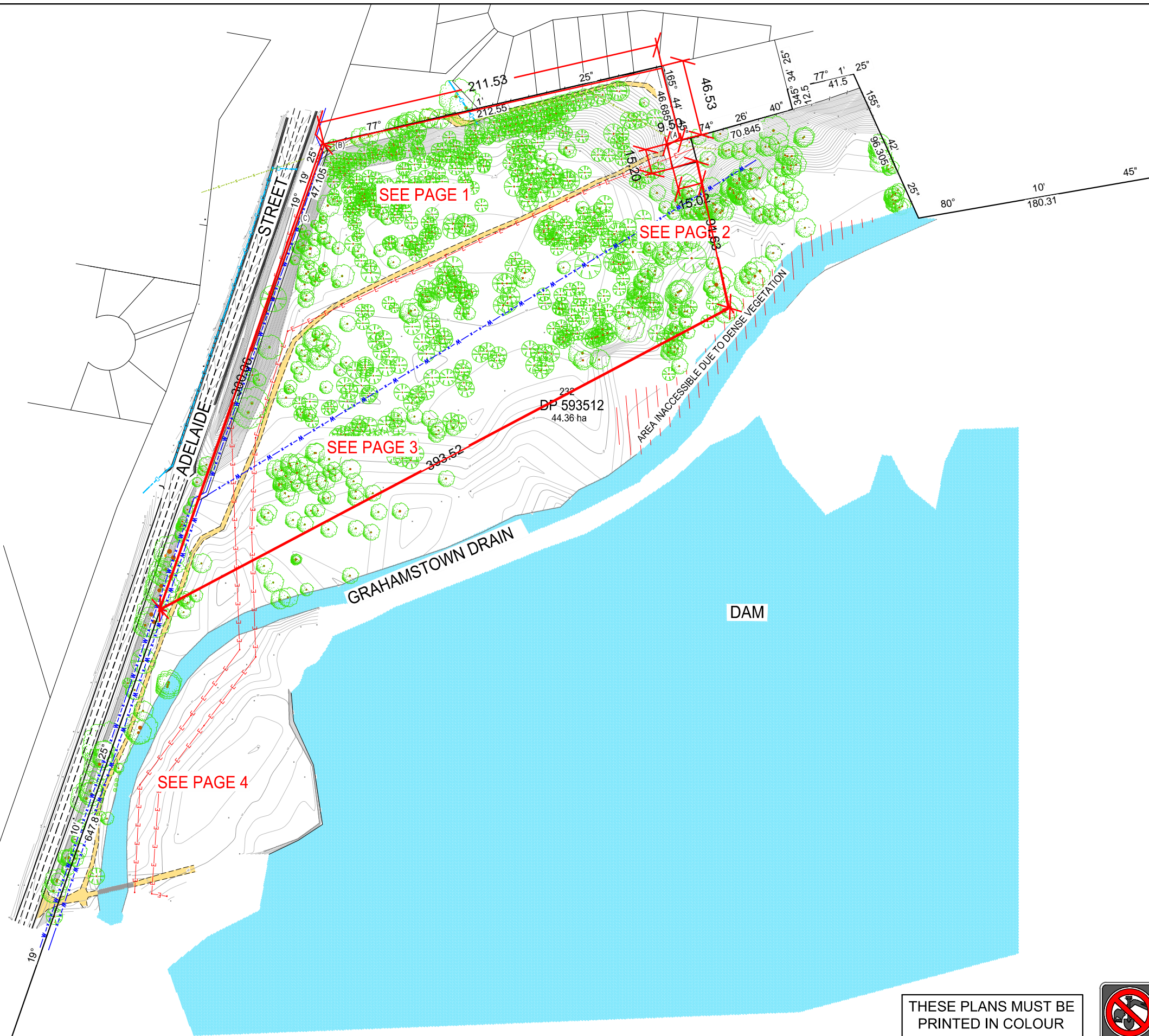
NEIGHBOURING BUILDINGS, RIDGES AND ROOF POSITIONS ARE APPROXIMATE ONLY.

SERVICES SHOWN HEREON HAVE BEEN DETERMINED FROM VISUAL EVIDENCE ONLY. PRIOR TO ANY DEMOLITION, EXCAVATION OR CONSTRUCTION ON THE SITE, THE RELEVANT AUTHORITY SHOULD BE CONTACTED TO ESTABLISH DETAILED LOCATION AND DEPTH.

ANY PERMITTED DOWNLOADING, ELECTRONIC STORAGE, DISPLAY, PRINT, COPY OR REPRODUCTION OF THIS SURVEY SHOULD CONTAIN NO ALTERATION OR ADDITION TO THE SURVEY.

COPYRIGHT, THIS DRAWING IS THE PROPERTY OF, AND SHOULD NOT BE REPRODUCED IN PART OR WHOLE WITHOUT THE WRITTEN PERMISSION OF PULVER COOPER & BLACKLEY P/L.

THESE NOTES FORM AN INTEGRAL PART OF THE PLAN.



THESE PLANS MUST BE
PRINTED IN COLOUR



INSTRUCTION NUMBER: 16/146				
FILE ID: 143163				
SURVEYED: SY & LH				
DESIGNED: -				
DRAWN: SY & LH				
CHECKED: TS				
DATUM: AHD				
CONTOUR INTERVAL: 0.2m				
	A	INITIAL ISSUE	LH	31/08/17
	NO.	DESCRIPTION	DRAWN	DATE

pcb
PULVER COOPER & BLACKLEY

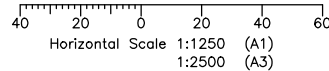
SURVEYORS TOWN PLANNERS
CIVIL ENGINEERS PROJECT MANAGERS

COPYRIGHT ©
Pulver Cooper & Blackley Pty.Ltd.
Other than as permitted by the Copyright Act 1968,
reproduction, publication or use without prior written
permission of Pulver, Cooper & Blackley Pty.Ltd. is
prohibited.

P.O. Box 729 98 LAWES STREET
NEWCASTLE 2300 EAST MAITLAND 2323
Ph (02) 4929 3882 Ph (02) 4934 3026
Fax (02) 4926 2214 Fax (02) 4934 3027

PLAN:
PARTIAL DETAIL SURVEY PLAN OF
LOT 232 DP 593512
251 ADELAIDE STREET,
RAYMOND TERRACE
LGA : PORT STEPHENS

CLIENT:
SKUBITHIA PTY LTD &
LIONDARI
HOLDINGS PTY LTD



No. OF SHEETS
10
SHEET No.
1

NOTE:

THIS DETAIL SURVEY IS NOT A "LAND SURVEY" AS DEFINED BY THE SURVEYING AND SPATIAL INFORMATION ACT, 2002. IF ANY CONSTRUCTION OR DESIGN WORK WHICH RELIES ON CRITICAL SETBACKS FROM THE STREET OR BOUNDARIES IS PLANNED, IT WOULD BE IMPERATIVE TO CARRY OUT FURTHER SURVEY WORK TO DETERMINE THE BOUNDARY DIMENSIONS.

THE POSITION OF THE BOUNDARIES HAVE BEEN CALCULATED FROM THE SURVEY DEFINITION SHOWN ON DP 593512.

IF FURTHER DEVELOPMENT IS CONTEMPLATED ON OR NEAR THE BOUNDARIES THEN SURVEY MARKS SHOULD BE PLACED AND THE POSITION OF IMPROVEMENTS VERIFIED.

WE HAVE NOT INSPECTED THE TITLE DEEDS OR CERTIFICATE OF TITLE AND ACCORDINGLY CANNOT REPORT ON THE EXISTENCE OF ANY EASEMENTS, RESTRICTIONS OR POSITIVE COVENANTS AFFECTING THE SUBJECT LAND, APART FROM THOSE SHOWN ON OUR RECORD COPY OF THE PLAN.

BEARINGS SHOWN RELATE TO MGA NORTH.

ORIGIN OF AUSTRALIAN HEIGHT DATUM WAS FROM PM 15574 RL 9.784 AS OBTAINED FROM SCIMS 15 AUGUST 2017.

CONTOURS SHOWN DEPICT THE TOPOGRAPHY, EXCEPT AT SPOT LEVELS SHOWN, THEY DO NOT REPRESENT THE EXACT LEVEL AT ANY PARTICULAR POINT.

DO NOT SCALE OFF THIS PLAN. RELATIONSHIPS OF IMPROVEMENTS TO BOUNDARIES IS DIAGRAMMATIC ONLY. WHERE CLEARANCES ARE CRITICAL THEY SHOULD BE CONFIRMED BY A FURTHER BOUNDARY SURVEY.

NEIGHBOURING BUILDINGS, RIDGES AND ROOF POSITIONS ARE APPROXIMATE ONLY.

SERVICES SHOWN HEREON HAVE BEEN DETERMINED FROM VISUAL EVIDENCE ONLY. PRIOR TO ANY DEMOLITION, EXCAVATION OR CONSTRUCTION ON THE SITE, THE RELEVANT AUTHORITY SHOULD BE CONTACTED TO ESTABLISH DETAILED LOCATION AND DEPTH.

ANY PERMITTED DOWNLOADING, ELECTRONIC STORAGE, DISPLAY, PRINT, COPY OR REPRODUCTION OF THIS SURVEY SHOULD CONTAIN NO ALTERATION OR ADDITION TO THE SURVEY.

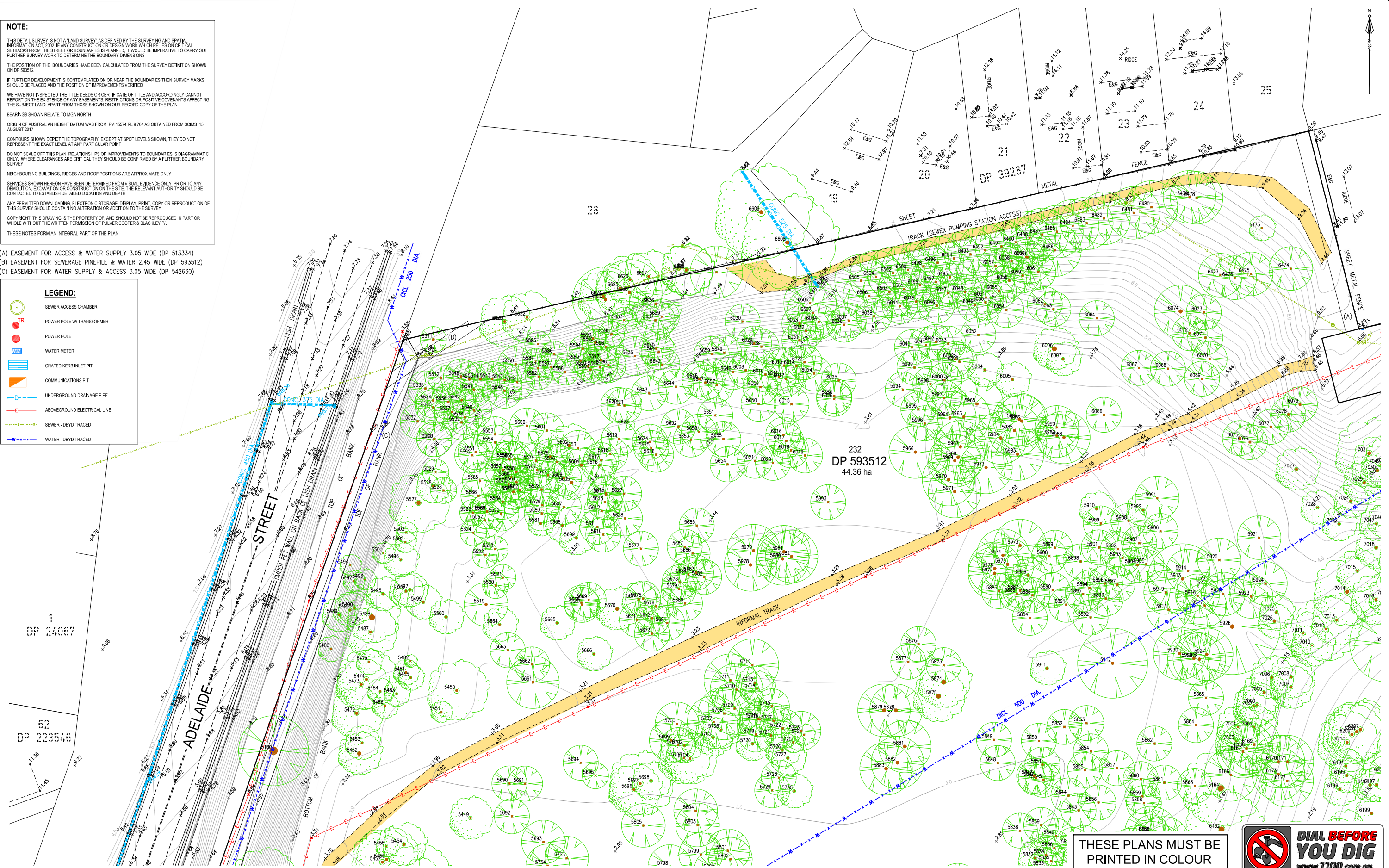
COPYRIGHT: THIS DRAWING IS THE PROPERTY OF AND SHOULD NOT BE REPRODUCED IN PART OR WHOLE WITHOUT THE WRITTEN PERMISSION OF PULVER COOPER & BLACKLEY P/L.

THESE NOTES FORM AN INTEGRAL PART OF THE PLAN.

- (A) EASEMENT FOR ACCESS & WATER SUPPLY 3.05 WIDE (DP 513334)
 (B) EASEMENT FOR SEWERAGE PIPELINE & WATER 2.45 WIDE (DP 593512)
 (C) EASEMENT FOR WATER SUPPLY & ACCESS 3.05 WIDE (DP 542630)

LEGEND:

- SEWER ACCESS CHAMBER
- POWER POLE W/ TRANSFORMER
- POWER POLE
- WATER METER
- GRATED KERB INLET PIT
- COMMUNICATIONS PIT
- UNDERGROUND DRAINAGE PIPE
- ABOVEGROUND ELECTRICAL LINE
- SEWER - BYRD TRACED
- WATER - BYRD TRACED



THESE PLANS MUST BE
PRINTED IN COLOUR



INSTRUCTION NUMBER: 16/146			
FILE ID:	143163		
SURVEYED:	SY & LH		
DESIGNED:	-		
DRAWN:	SY & LH		
CHECKED:	TS		
DATUM:	AHD		
CONTOUR INTERVAL:	0.2m		
		A	INITIAL ISSUE
		LH	31/08/17
NO.	DESCRIPTION	DRAWN	DATE

pcb
PULVER COOPER & BLACKLEY

SURVEYORS TOWN PLANNERS
CIVIL ENGINEERS PROJECT MANAGERS

COPYRIGHT ©
 Pulver Cooper & Blackley Pty Ltd.
 Other than as permitted by the Copyright Act 1968,
 reproduction, publication or use without prior written
 permission of Pulver, Cooper & Blackley Pty Ltd. is
 prohibited.

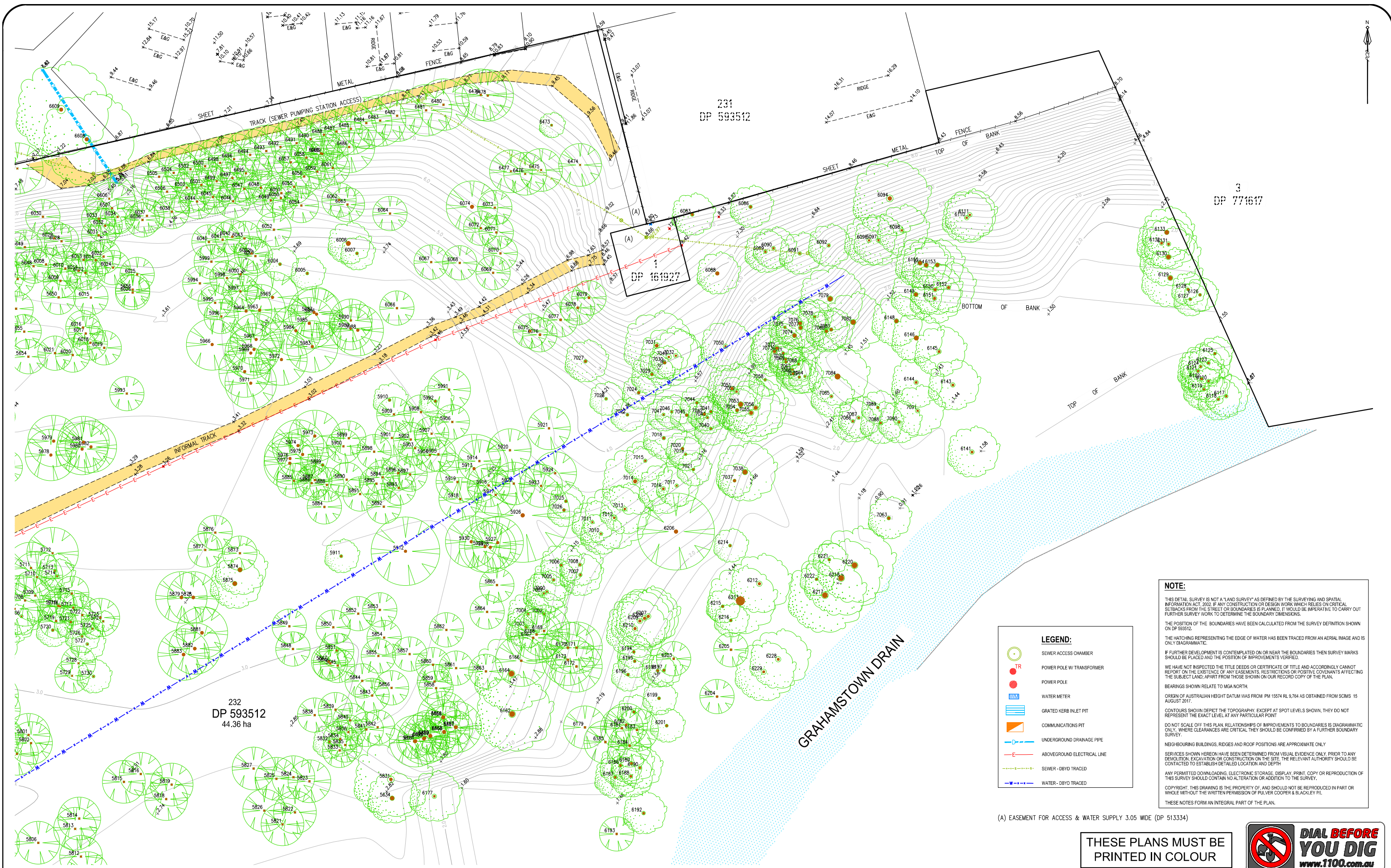
P.O. Box 729 98 LAWES STREET
 NEWCASTLE 2300 EAST MAITLAND 2323
 Ph (02) 4929 3882 Ph (02) 4934 3026
 Fax (02) 4926 2214 Fax (02) 4934 3027

PLAN:
 PARTIAL DETAIL SURVEY PLAN OF
 LOT 232 DP 593512
 251 ADELAIDE STREET,
 RAYMOND TERRACE
 LGA : PORT STEPHENS


CLIENT:
 SKUBITHIA PTY LTD &
 LIONDARI
 HOLDINGS PTY LTD

Horizontal Scale 1:400 (A1)
 1:800 (A3)

No. OF SHEETS
 10
 SHEET No.
2



INSTRUCTION NUMBER: 16/146			
FILE ID:	143163		
SURVEYED:	SY & LH		
DESIGNED:	-		
DRAWN:	SY & LH		
CHECKED:	TS		
DATUM:	AHD		
CONTOUR INTERVAL:	0.2M		
		NO.	DESCRIPTION
		A	INITIAL ISSUE
		LH	31/08/17
		DRAWN	DATE



pcb****
PULVER COOPER & BLACKLEY

SURVEYORS TOWN PLANNERS
CIVIL ENGINEERS PROJECT MANAGERS

COPYRIGHT ©
Pulver Cooper & Blackley Pty Ltd.
Other than as permitted by the Copyright Act 1968,
reproduction, publication or use without prior written
permission of Pulver, Cooper & Blackley Pty Ltd. is
prohibited.


P.O. Box 729
NEWCASTLE 2300
Ph (02) 4929 3882
Fax (02) 4926 2214

98 LAWES STREET
EAST MAITLAND 2323
Ph (02) 4934 3026
Fax (02) 4934 3027

PLAN:
PARTIAL DETAIL SURVEY PLAN OF
LOT 232 DP 593512
251 ADELAIDE STREET,
RAYMOND TERRACE
LGA : PORT STEPHENS

CLIENT:
SKUBITHIA PTY LTD &
LIONDARI
HOLDINGS PTY LTD

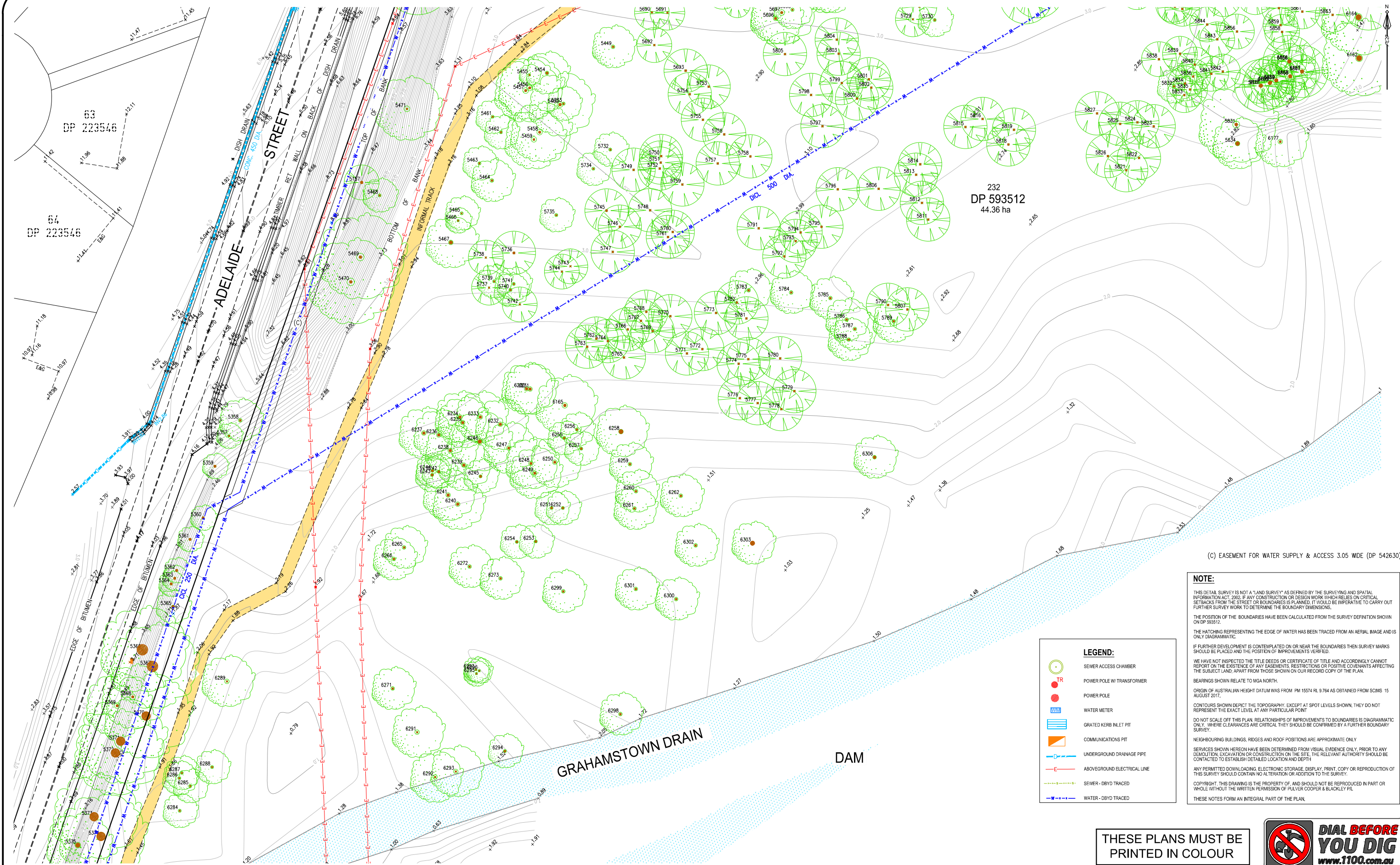
THESE PLANS MUST BE
PRINTED IN COLOUR



**DIAL BEFORE
YOU DIG**
www.1100.com.au

No. OF SHEETS
10
SHEET No.
3

Horizontal Scale 1:400 (A1)
1:800 (A3)



(C) EASEMENT FOR WATER SUPPLY & ACCESS 3.05 WIDE (DP 542630)

NOTE:

THIS DETAIL SURVEY IS NOT A "LAND SURVEY" AS DEFINED BY THE SURVEYING AND SPATIAL INFORMATION ACT, 2002. IF ANY CONSTRUCTION OR DESIGN WORK WHICH RELIES ON CRITICAL SETBACKS FROM THE STREET OR BOUNDARIES IS PLANNED, IT WOULD BE IMPERATIVE TO CARRY OUT FURTHER SURVEY WORK TO DETERMINE THE BOUNDARY DIMENSIONS.

THE POSITION OF THE BOUNDARIES HAVE BEEN CALCULATED FROM THE SURVEY DEFINITION SHOWN ON DP 593512.

THE HATCHING REPRESENTING THE EDGE OF WATER HAS BEEN TRACED FROM AN AERIAL IMAGE AND IS ONLY DIAGRAMMATIC.

IF FURTHER DEVELOPMENT IS CONTEMPLATED ON OR NEAR THE BOUNDARIES THEN SURVEY MARKS SHOULD BE PLACED AND THE POSITION OF IMPROVEMENTS VERIFIED.

WE HAVE NOT INSPECTED THE TITLE DEEDS OR CERTIFICATE OF TITLE AND ACCORDINGLY CANNOT REPORT ON THE EXISTENCE OF ANY EASEMENTS, RESTRICTIONS OR POSITIVE COVENANTS AFFECTING THE SUBJECT LAND, APART FROM THOSE SHOWN ON OUR RECORD COPY OF THE PLAN.

BEARINGS SHOWN RELATE TO MGA NORTH.

ORIGIN OF AUSTRALIAN HEIGHT DATUM WAS FROM PM 15574 RL 9.764 AS OBTAINED FROM SCIMS 15 AUGUST 2017.

CONTOURS SHOWN DEPICT THE TOPOGRAPHY. EXCEPT AT SPOT LEVELS SHOWN, THEY DO NOT REPRESENT THE EXACT LEVEL AT ANY PARTICULAR POINT

DO NOT SCALE OFF THIS PLAN. RELATIONSHIPS OF IMPROVEMENTS TO BOUNDARIES IS DIAGRAMMATIC ONLY. WHERE CLEARANCES ARE CRITICAL THEY SHOULD BE CONFIRMED BY A FURTHER BOUNDARY SURVEY.

NEIGHBOURING BUILDINGS, RIDGES AND ROOF POSITIONS ARE APPROXIMATE ONLY











SERVICES SHOWN HEREON HAVE BEEN DETERMINED FROM VISUAL EVIDENCE ONLY. PRIOR TO ANY DEMOLITION, EXCAVATION OR CONSTRUCTION ON THE SITE, THE RELEVANT AUTHORITY SHOULD BE CONTACTED TO ESTABLISH DETAILED LOCATION AND DEPTH.

ANY PERMITTED DOWNLOADING, ELECTRONIC STORAGE, DISPLAY, PRINT, COPY OR REPRODUCTION OF THIS SURVEY SHOULD CONTAIN NO ALTERATION OR ADDITION TO THE SURVEY

COPYRIGHT. THIS DRAWING IS THE PROPERTY OF, AND SHOULD NOT BE REPRODUCED IN PART OR WHOLE WITHOUT THE WRITTEN PERMISSION OF PULVER COOPER & BLACKLEY P/L

THESE NOTES FORM AN INTEGRAL PART OF THE PLAN.

LEGEND:

- | | |
|---|-----------------------------|
|  | SEWER ACCESS CHAMBER |
|  | POWER POLE W/ TRANSFORMER |
|  | POWER POLE |
|  | WATER METER |
|  | GRATED KERB INLET PIT |
|  | COMMUNICATIONS PIT |
|  | UNDERGROUND DRAINAGE PIPE |
|  | ABOVEGROUND ELECTRICAL LINE |
|  | SEWER - DBYD TRACED |
|  | WATER - DBYD TRACED |

THESE PLANS MUST BE
PRINTED IN COLOUR



INSTRUCTION NUMBER: 16/146
FILE ID: 143163
SURVEYED: SY & LH
DESIGNED: -
DRAWN: SY & LH
CHECKED: TS
DATUM: AHD
CONTOUR INTERVAL: 0.2m

A	INITIAL ISSUE	LH	31/08/17
NO.	DESCRIPTION	DRAWN	DATE



SURVEYORS TOWN PLANNERS
CIVIL ENGINEERS PROJECT MANAGERS

COPYRIGHT ©

Pulver Cooper & Blackley Pty.Ltd.
Other than as permitted by the Copyright Act 1968,
reproduction, publication or use without prior written
permission of Pulver, Cooper & Blackley Pty.Ltd. is
prohibited.

P.O. Box 729
NEWCASTLE 2300
Ph (02) 4929 3882
Fax (02) 4926 2214

98 LAWES STREET
EAST MAITLAND 2323
Ph (02) 4934 3026
Fax (02) 4934 3027

PLAN:
PARTIAL DETAIL SURVEY PLAN OF
LOT 232 DP 593512
251 ADELAIDE STREET,
RAYMOND TERRACE
LGA : PORT STEPHENS

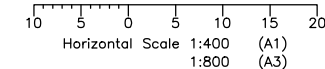
CLIENT: SKUBITHIA PTY LTD &
LIONDARI
HOLDINGS PTY LTD

No. OF SHEETS

10

SHEET No.

4



Plot Date: 31/08/2017 Cad File: 17_146 - Detail Survey Plan (ID 143163)

NOTE:

THIS DETAIL SURVEY IS NOT A "LAND SURVEY" AS DEFINED BY THE SURVEYING AND SPATIAL INFORMATION ACT, 2002. IF ANY CONSTRUCTION OR DESIGN WORK WHICH RELIES ON CRITICAL SETBACKS FROM THE STREET OR BOUNDARIES IS PLANNED, IT WOULD BE IMPERATIVE TO CARRY OUT FURTHER SURVEY WORK TO DETERMINE THE BOUNDARY DIMENSIONS.

THE POSITION OF THE BOUNDARIES HAVE BEEN CALCULATED FROM THE SURVEY DEFINITION SHOWN ON DP 593512.

THE HATCHING REPRESENTING THE EDGE OF WATER HAS BEEN TRACED FROM AN AERIAL IMAGE AND IS ONLY DIAGRAMMATIC.

IF FURTHER DEVELOPMENT IS CONTEMPLATED ON OR NEAR THE BOUNDARIES THEN SURVEY MARKS SHOULD BE PLACED AND THE POSITION OF IMPROVEMENTS VERIFIED.

WE HAVE NOT INSPECTED THE TITLE DEEDS OR CERTIFICATE OF TITLE AND ACCORDINGLY CANNOT REPORT ON THE EXISTENCE OF ANY EASEMENTS, RESTRICTIONS OR POSITIVE COVENANTS AFFECTING THE SUBJECT LAND, APART FROM THOSE SHOWN ON OUR RECORD COPY OF THE PLAN.

BEARINGS SHOWN RELATE TO MGA NORTH.

ORIGIN OF AUSTRALIAN HEIGHT DATUM WAS FROM PM 15574 RL 9.764 AS OBTAINED FROM SCIMS 15 AUGUST 2017.

CONTOURS SHOWN DEPICT THE TOPOGRAPHY. EXCEPT AT SPOT LEVELS SHOWN, THEY DO NOT REPRESENT THE EXACT LEVEL AT ANY PARTICULAR POINT.

DO NOT SCALE OFF THIS PLAN, RELATIONSHIPS OF IMPROVEMENTS TO BOUNDARIES IS DIAGRAMMATIC ONLY. WHERE CLEARANCES ARE CRITICAL THEY SHOULD BE CONFIRMED BY A FURTHER BOUNDARY SURVEY.

NEIGHBOURING BUILDINGS, RIDGES AND ROOF POSITIONS ARE APPROXIMATE ONLY.

SERVICES SHOWN HEREON HAVE BEEN DETERMINED FROM VISUAL EVIDENCE ONLY. PRIOR TO ANY DEMOLITION, EXCAVATION OR CONSTRUCTION ON THE SITE, THE RELEVANT AUTHORITY SHOULD BE CONTACTED TO ESTABLISH DETAILED LOCATION AND DEPTH.

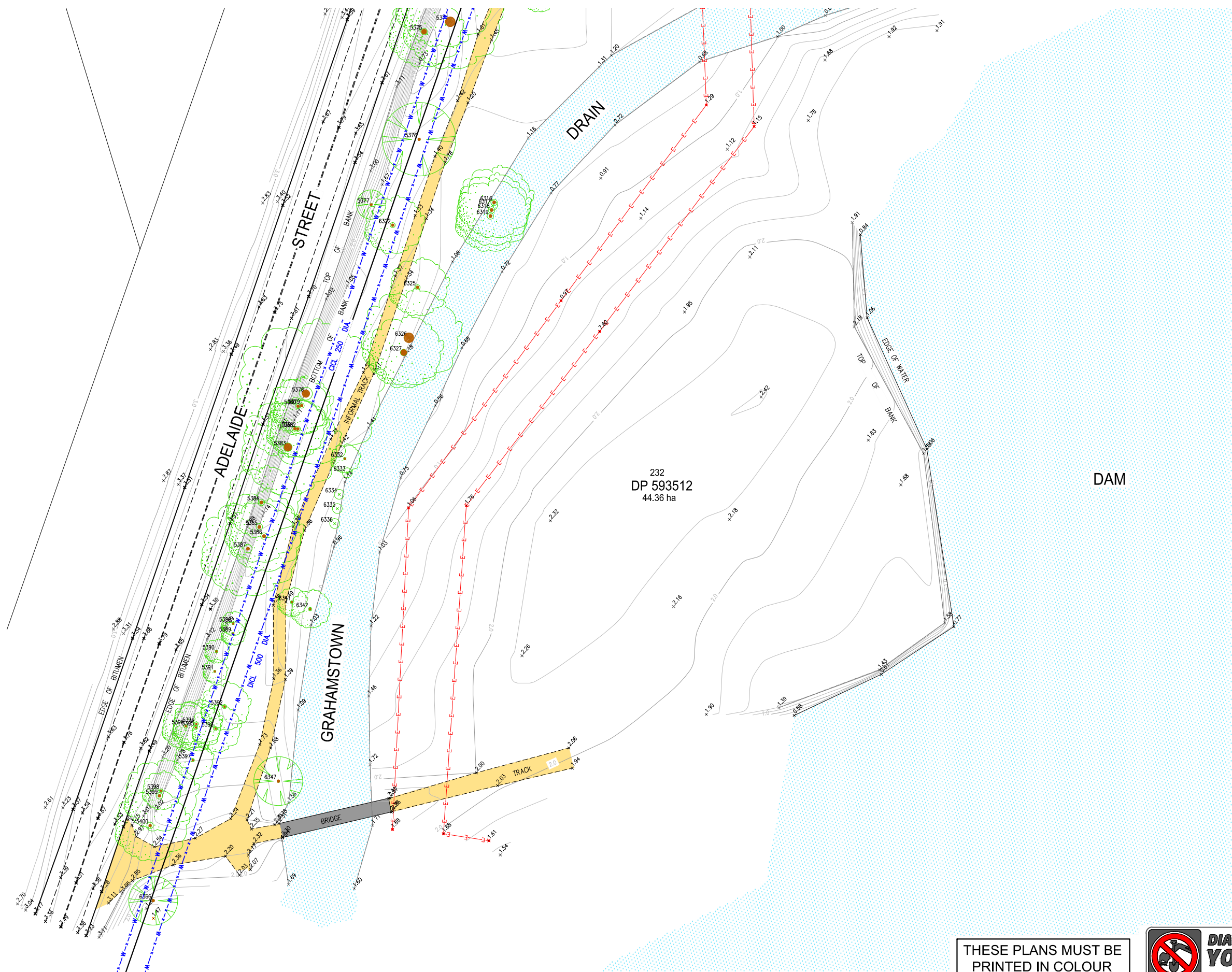
ANY PERMITTED DOWNLOADING, ELECTRONIC STORAGE, DISPLAY, PRINT, COPY OR REPRODUCTION OF THIS SURVEY SHOULD CONTAIN NO ALTERATION OR ADDITION TO THE SURVEY.

COPYRIGHT, THIS DRAWING IS THE PROPERTY OF, AND SHOULD NOT BE REPRODUCED IN PART OR WHOLE WITHOUT THE WRITTEN PERMISSION OF PULVER COOPER & BLACKLEY PTY LTD.

THESE NOTES FORM AN INTEGRAL PART OF THE PLAN.

LEGEND:

- SEWER ACCESS CHAMBER
- POWER POLE W/ TRANSFORMER
- POWER POLE
- WATER METER
- GRATED KERB INLET PIT
- COMMUNICATIONS PIT
- UNDERGROUND DRAINAGE PIPE
- ABOVEGROUND ELECTRICAL LINE
- SEWER - DBVD TRACED
- WATER - DBVD TRACED



THESE PLANS MUST BE
PRINTED IN COLOUR



INSTRUCTION NUMBER: 16/146				
FILE ID: 143163				
SURVEYED: SY & LH				
DESIGNED: -				
DRAWN: SY & LH				
CHECKED: TS				
DATUM: AHD				
CONTOUR INTERVAL: 0.2m				
	A	INITIAL ISSUE	LH	31/08/17
	NO.	DESCRIPTION	DRAWN	DATE

pcb
PULVER COOPER & BLACKLEY

SURVEYORS TOWN PLANNERS
CIVIL ENGINEERS PROJECT MANAGERS

COPYRIGHT ©
Pulver Cooper & Blackley Pty.Ltd.
Other than as permitted by the Copyright Act 1968,
reproduction, publication or use without prior written
permission of Pulver, Cooper & Blackley Pty.Ltd. is
prohibited.

P.O. Box 729 98 LAWES STREET
NEWCASTLE 2300 EAST MAITLAND 2323
Ph (02) 4929 3882 Ph (02) 4934 3026
Fax (02) 4926 2214 Fax (02) 4934 3027

PLAN:
PARTIAL DETAIL SURVEY PLAN OF
LOT 232 DP 593512
251 ADELAIDE STREET,
RAYMOND TERRACE
LGA : PORT STEPHENS

CLIENT:
SKUBITHIA PTY LTD &
LIONDARI
HOLDINGS PTY LTD

10 5 0 5 10 15 20
Horizontal Scale 1:400 (A1)
1:800 (A3)

No. OF SHEETS
10
SHEET No.

5

LEGEND:

- SEWER ACCESS CHAMBER
- POWER POLE W/ TRANSFORMER
- POWER POLE
- WATER METER
- GRATED KERB INLET PIT
- COMMUNICATIONS PIT
- UNDERGROUND DRAINAGE PIPE
- ABOVEGROUND ELECTRICAL LINE
- SEWER - DBYD TRACED
- WATER - DBYD TRACED

- (A) EASEMENT FOR ACCESS & WATER SUPPLY 3.05 WIDE (DP 513334)
(B) EASEMENT FOR SEWERAGE PIPELINE & WATER 2.45 WIDE (DP 593512)
(C) EASEMENT FOR WATER SUPPLY & ACCESS 3.05 WIDE (DP 542630)

NOTE:

THIS DETAIL SURVEY IS NOT A "LAND SURVEY" AS DEFINED BY THE SURVEYING AND SPATIAL INFORMATION ACT, 2002. IF ANY CONSTRUCTION OR DESIGN WORK WHICH RELIES ON CRITICAL SETBACKS FROM THE STREET OR BOUNDARIES IS PLANNED, IT WOULD BE IMPERATIVE TO CARRY OUT FURTHER SURVEY WORK TO DETERMINE THE BOUNDARY DIMENSIONS.

THE POSITION OF THE BOUNDARIES HAVE BEEN CALCULATED FROM THE SURVEY DEFINITION SHOWN ON DP 593512.

IF FURTHER DEVELOPMENT IS CONTEMPLATED ON OR NEAR THE BOUNDARIES THEN SURVEY MARKS SHOULD BE PLACED AND THE POSITION OF IMPROVEMENTS VERIFIED.

WE HAVE NOT INSPECTED THE TITLE DEEDS OR CERTIFICATE OF TITLE AND ACCORDINGLY CANNOT REPORT ON THE EXISTENCE OF ANY EASEMENTS, RESTRICTIONS OR POSITIVE COVENANTS AFFECTING THE SUBJECT LAND, APART FROM THOSE SHOWN ON OUR RECORD COPY OF THE PLAN.

BEARINGS SHOWN RELATE TO MGA NORTH.

ORIGIN OF AUSTRALIAN HEIGHT DATUM WAS FROM PM 15574 RL 9.764 AS OBTAINED FROM SCIMS 15 AUGUST 2017.

CONTOURS SHOWN DEPICT THE TOPOGRAPHY, EXCEPT AT SPOT LEVELS SHOWN, THEY DO NOT REPRESENT THE EXACT LEVEL AT ANY PARTICULAR POINT.

DO NOT SCALE OFF THIS PLAN. RELATIONSHIPS OF IMPROVEMENTS TO BOUNDARIES IS DIAGNOSTIC ONLY. WHERE CLEARANCES ARE CRITICAL THEY SHOULD BE CONFIRMED BY A FURTHER BOUNDARY SURVEY.

NEIGHBOURING BUILDINGS, RIDGES AND ROOF POSITIONS ARE APPROXIMATE ONLY.

SERVICES SHOWN HEREON HAVE BEEN DETERMINED FROM VISUAL EVIDENCE ONLY. PRIOR TO ANY DEMOLITION, EXCAVATION OR CONSTRUCTION ON THE SITE, THE RELEVANT AUTHORITY SHOULD BE CONTACTED TO ESTABLISH DETAILED LOCATION AND DEPTH.

ANY PERMITTED DOWNLOADING, ELECTRONIC STORAGE, DISPLAY, PRINT, COPY OR REPRODUCTION OF THIS SURVEY SHOULD CONTAIN NO ALTERATION OR ADDITION TO THE SURVEY.

COPYRIGHT, THIS DRAWING IS THE PROPERTY OF, AND SHOULD NOT BE REPRODUCED IN PART OR WHOLE WITHOUT THE WRITTEN PERMISSION OF PULVER COOPER & BLACKLEY P/L.

THESE NOTES FORM AN INTEGRAL PART OF THE PLAN.



THESE PLANS MUST BE
PRINTED IN COLOUR



INSTRUCTION NUMBER: 16/146				
FILE ID: 143163				
SURVEYED: SY & LH				
DESIGNED: -				
DRAWN: SY & LH				
CHECKED: TS				
DATUM: AHD				
CONTOUR INTERVAL: 0.2m				
	A	INITIAL ISSUE	LH	31/08/17
	NO.	DESCRIPTION	DRAWN	DATE

pcb
PULVER COOPER & BLACKLEY

SURVEYORS TOWN PLANNERS
CIVIL ENGINEERS PROJECT MANAGERS

COPYRIGHT ©
Pulver Cooper & Blackley Pty.Ltd.
Other than as permitted by the Copyright Act 1968,
reproduction, publication or use without prior written
permission of Pulver, Cooper & Blackley Pty.Ltd. is
prohibited.

P.O. Box 729 98 LAWES STREET
NEWCASTLE 2300 EAST MAITLAND 2323
Ph (02) 4929 3882 Ph (02) 4934 3026
Fax (02) 4926 2214 Fax (02) 4934 3027

PLAN:
PARTIAL DETAIL SURVEY PLAN OF
LOT 232 DP 593512
251 ADELAIDE STREET,
RAYMOND TERRACE
LGA : PORT STEPHENS

CLIENT:
SKUBITHIA PTY LTD &
LIONDARI
HOLDINGS PTY LTD

Horizontal Scale 1:1250 (A1)
1:2500 (A3)

No. OF SHEETS
10
SHEET No.
6

NOTE:

THIS DETAIL SURVEY IS NOT A "LAND SURVEY" AS DEFINED BY THE SURVEYING AND SPATIAL INFORMATION ACT, 2002. IF ANY CONSTRUCTION OR DESIGN WORK WHICH RELIES ON CRITICAL SETBACKS FROM THE STREET OR BOUNDARIES IS PLANNED, IT WOULD BE IMPERATIVE TO CARRY OUT FURTHER SURVEY WORK TO DETERMINE THE BOUNDARY DIMENSIONS.

THE POSITION OF THE BOUNDARIES HAVE BEEN CALCULATED FROM THE SURVEY DEFINITION SHOWN ON DP 593512.

THE HATCHING REPRESENTING THE EDGE OF WATER HAS BEEN TRACED FROM AN AERIAL IMAGE AND IS ONLY DIAGNOSTIC.

IF FURTHER DEVELOPMENT IS CONTEMPLATED ON OR NEAR THE BOUNDARIES THEN SURVEY MARKS SHOULD BE PLACED AND THE POSITION OF IMPROVEMENTS VERIFIED.

WE HAVE NOT INSPECTED THE TITLE DEEDS OR CERTIFICATE OF TITLE AND ACCORDINGLY CANNOT REPORT ON THE EXISTENCE OF ANY EASEMENTS, RESTRICTIONS OR POSITIVE COVENANTS AFFECTING THE SUBJECT LAND, APART FROM THOSE SHOWN ON OUR RECORD COPY OF THE PLAN.

BEARINGS SHOWN RELATE TO MGA NORTH.

ORIGIN OF AUSTRALIAN HEIGHT DATUM WAS FROM: PM 15574 RL 9.764 AS OBTAINED FROM SCIMS 15 AUGUST 2017.

CONTOURS SHOWN DEPICT THE TOPOGRAPHY, EXCEPT AT SPOT LEVELS SHOWN, THEY DO NOT REPRESENT THE EXACT LEVEL AT ANY PARTICULAR POINT.

DO NOT SCALE OFF THIS PLAN. RELATIONSHIPS OF IMPROVEMENTS TO BOUNDARIES IS DIAGNOSTIC ONLY. WHERE CLEARANCES ARE CRITICAL THEY SHOULD BE CONFIRMED BY A FURTHER BOUNDARY SURVEY.

NEIGHBOURING BUILDINGS, RIDGES AND ROOF POSITIONS ARE APPROXIMATE ONLY.

SERVICES SHOWN HEREON HAVE BEEN DETERMINED FROM VISUAL EVIDENCE ONLY. PRIOR TO ANY DEMOLITION, EXCAVATION OR CONSTRUCTION ON THE SITE, THE RELEVANT AUTHORITY SHOULD BE CONTACTED TO ESTABLISH DETAILED LOCATION AND DEPTH.

ANY PERMITTED DOWNLOADING, ELECTRONIC STORAGE, DISPLAY, PRINT, COPY OR REPRODUCTION OF THIS SURVEY SHOULD CONTAIN NO ALTERATION OR ADDITION TO THE SURVEY.

COPYRIGHT, THIS DRAWING IS THE PROPERTY OF, AND SHOULD NOT BE REPRODUCED IN PART OR WHOLE WITHOUT THE WRITTEN PERMISSION OF PULVER COOPER & BLACKLEY P/L.

THESE NOTES FORM AN INTEGRAL PART OF THE PLAN.

- (A) EASEMENT FOR ACCESS & WATER SUPPLY 3.05 WIDE (DP 513334)
 (B) EASEMENT FOR SEWERAGE PIPELINE & WATER 2.45 WIDE (DP 593512)
 (C) EASEMENT FOR WATER SUPPLY & ACCESS 3.05 WIDE (DP 542630)

LEGEND:

- SEWER ACCESS CHAMBER
- POWER POLE W/ TRANSFORMER
- POWER POLE
- WATER METER
- GRATED KERB INLET PIT
- COMMUNICATIONS PIT
- UNDERGROUND DRAINAGE PIPE
- ABOVEGROUND ELECTRICAL LINE
- SEWER - DBYD TRACED
- WATER - DBYD TRACED

AERIAL IMAGE TAKEN FROM NEAR MAPS
 AERIAL IMAGE TAKEN ON 05/09/2017



THESE PLANS MUST BE
 PRINTED IN COLOUR



INSTRUCTION NUMBER: 16/146
 FILE ID: 143163
 SURVEYED: SY & LH
 DESIGNED: -
 DRAWN: SY & LH
 CHECKED: TS
 DATUM: AHD
 CONTOUR INTERVAL: 0.2m

NO.	DESCRIPTION	DRAWN	DATE
A	INITIAL ISSUE	LH	31/08/17

pcb
 PULVER COOPER & BLACKLEY
 SURVEYORS TOWN PLANNERS
 CIVIL ENGINEERS PROJECT MANAGERS

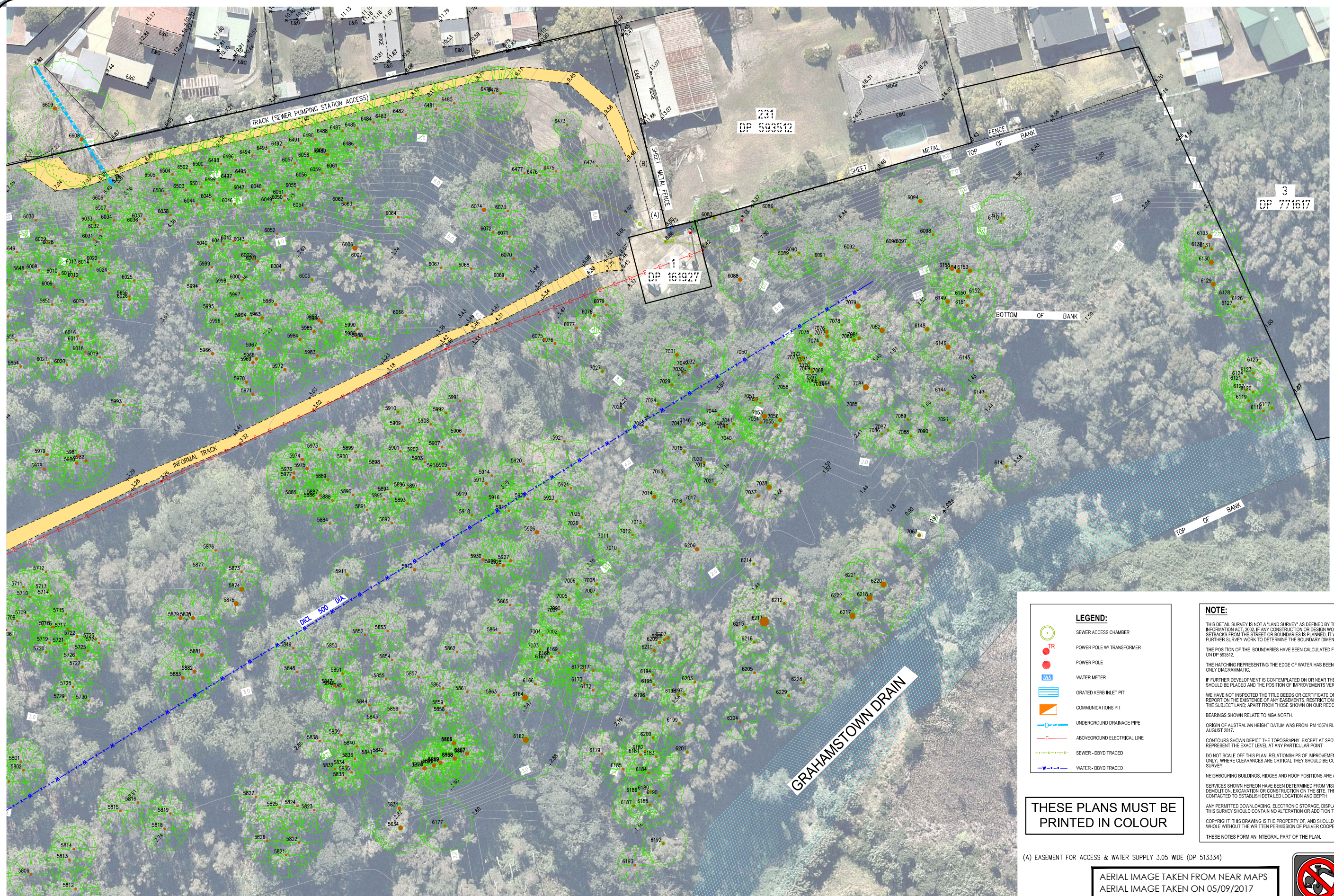
COPYRIGHT ©
 Pulver Cooper & Blackley Pty Ltd.
 Other than as permitted by the Copyright Act 1968,
 reproduction, publication or use without prior written
 permission of Pulver, Cooper & Blackley Pty Ltd. is
 prohibited.
 P.O. Box 729 98 LAWES STREET
 NEWCASTLE 2300 EAST MAITLAND 2323
 Ph (02) 4929 3882 Ph (02) 4934 3026
 Fax (02) 4926 2214 Fax (02) 4934 3027

PLAN:
 PARTIAL DETAIL SURVEY PLAN OF
 LOT 232 DP 593512
 251 ADELAIDE STREET,
 RAYMOND TERRACE
 LGA : PORT STEPHENS

CLIENT:
 SKUBITHIA PTY LTD &
 LIONDARI
 HOLDINGS PTY LTD

Horizontal Scale 1:400 (A1)
 1:800 (A3)

No. OF SHEETS
 10
 SHEET No.
7



THESE PLANS MUST BE
PRINTED IN COLOUR

(A) EASEMENT FOR ACCESS & WATER SUPPLY 3.05 WIDE (DP 513334)

AERIAL IMAGE TAKEN FROM NEAR MAPS
AERIAL IMAGE TAKEN ON 05/09/2017



NOTE:

THIS DETAIL SURVEY IS NOT A "LAND SURVEY" AS DEFINED BY THE SURVEYING AND SPATIAL INFORMATION ACT, 2002. IF ANY CONSTRUCTION OR DESIGN WORK WHICH RELIES ON CRITICAL SETBACKS FROM THE STREET OR BOUNDARIES IS PLANNED, IT WOULD BE IMPERATIVE TO CARRY OUT FURTHER SURVEY WORK TO DETERMINE THE BOUNDARY DIMENSIONS.

THE POSITION OF THE BOUNDARIES HAVE BEEN CALCULATED FROM THE SURVEY DEFINITION SHOWN ON DP 593512.

THE HATCHING REPRESENTING THE EDGE OF WATER HAS BEEN TRACED FROM AN AERIAL IMAGE AND IS ONLY DIAGRAMMATIC.

IF FURTHER DEVELOPMENT IS CONTEMPLATED ON OR NEAR THE BOUNDARIES THEN SURVEY MARKS SHOULD BE PLACED AND THE POSITION OF IMPROVEMENTS VERIFIED.

WE HAVE NOT INSPECTED THE TITLE DEEDS OR CERTIFICATE OF TITLE AND ACCORDINGLY CANNOT REPORT ON THE EXISTENCE OF ANY EASEMENTS, RESTRICTIONS OR POSITIVE COVENANTS AFFECTING THE SUBJECT LAND; APART FROM THOSE SHOWN ON OUR RECORD COPY OF THE PLAN.

BEARINGS SHOWN RELATE TO MGA NORTH.

ORIGIN OF AUSTRALIAN HEIGHT DATUM WAS FROM PM 15574 RL 9.764 AS OBTAINED FROM SCIMS 15 AUGUST 2017.

CONTOURS SHOWN DEPICT THE TOPOGRAPHY. EXCEPT AT SPOT LEVELS SHOWN, THEY DO NOT REPRESENT THE EXACT LEVEL AT ANY PARTICULAR POINT

DO NOT SCALE OFF THIS PLAN. RELATIONSHIPS OF IMPROVEMENTS TO BOUNDARIES IS DIAGRAMMATIC ONLY. WHERE CLEARANCES ARE CRITICAL THEY SHOULD BE CONFIRMED BY A FURTHER BOUNDARY SURVEY.

SERVICES SHOWN HEREON HAVE BEEN DETERMINED FROM VISUAL EVIDENCE ONLY. PRIOR TO ANY DEMOLITION, EXCAVATION OR CONSTRUCTION ON THE SITE, THE RELEVANT AUTHORITY SHOULD BE CONTACTED TO ESTABLISH DETAILED LOCATION AND DEPTH

ANY PERMITTED DOWNLOADING, ELECTRONIC STORAGE, DISPLAY, PRINT, COPY OR REPRODUCTION OF THIS SURVEY SHOULD CONTAIN NO ALTERATION OR ADDITION TO THE SURVEY.

COPYRIGHT. THIS DRAWING IS THE PROPERTY OF, AND SHOULD NOT BE REPRODUCED IN PART OR WHOLE WITHOUT THE WRITTEN PERMISSION OF PULVER COOPER & BLACKLEY P/L

THESE NOTES FORM AN INTEGRAL PART OF THE PLAN.

INSTRUCTION NUMBER: 16/146

FILE ID: 143163

SURVEYED: SY & LH

DESIGNED: —

DRAWN: SY & LH

CHECKED: TS

DATUM: AHD
CONTOUR INTERVAL: 0.2m

Plot Date: 31/08/2017 Cad File: 17_146 - Detail Survey Plan (ID 143163)



SURVEYORS TOWN PLANNERS
CIVIL ENGINEERS PROJECT MANAGERS

COPYRIGHT ©

Pulver Cooper & Blackley Pty.Ltd.
Other than as permitted by the Copyright Act 1968,
reproduction, publication or use without prior written
permission of Pulver, Cooper & Blackley Pty.Ltd. is
prohibited.

P.O. Box 729 98 LAWES STREET
NEWCASTLE 2300 EAST MAITLAND 2323
Ph (02) 4929 3882 Ph (02) 4934 3026
Fax (02) 4926 2214 Fax (02) 4934 3027

PLAN:
PARTIAL DETAIL SURVEY PLAN OF
LOT 232 DP 593512
251 ADELAIDE STREET,
RAYMOND TERRACE
LGA : PORT STEPHENS

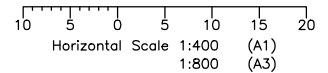
CLIENT: SKUBITHIA PTY LTD &
LIONDARI
HOLDINGS PTY LTD

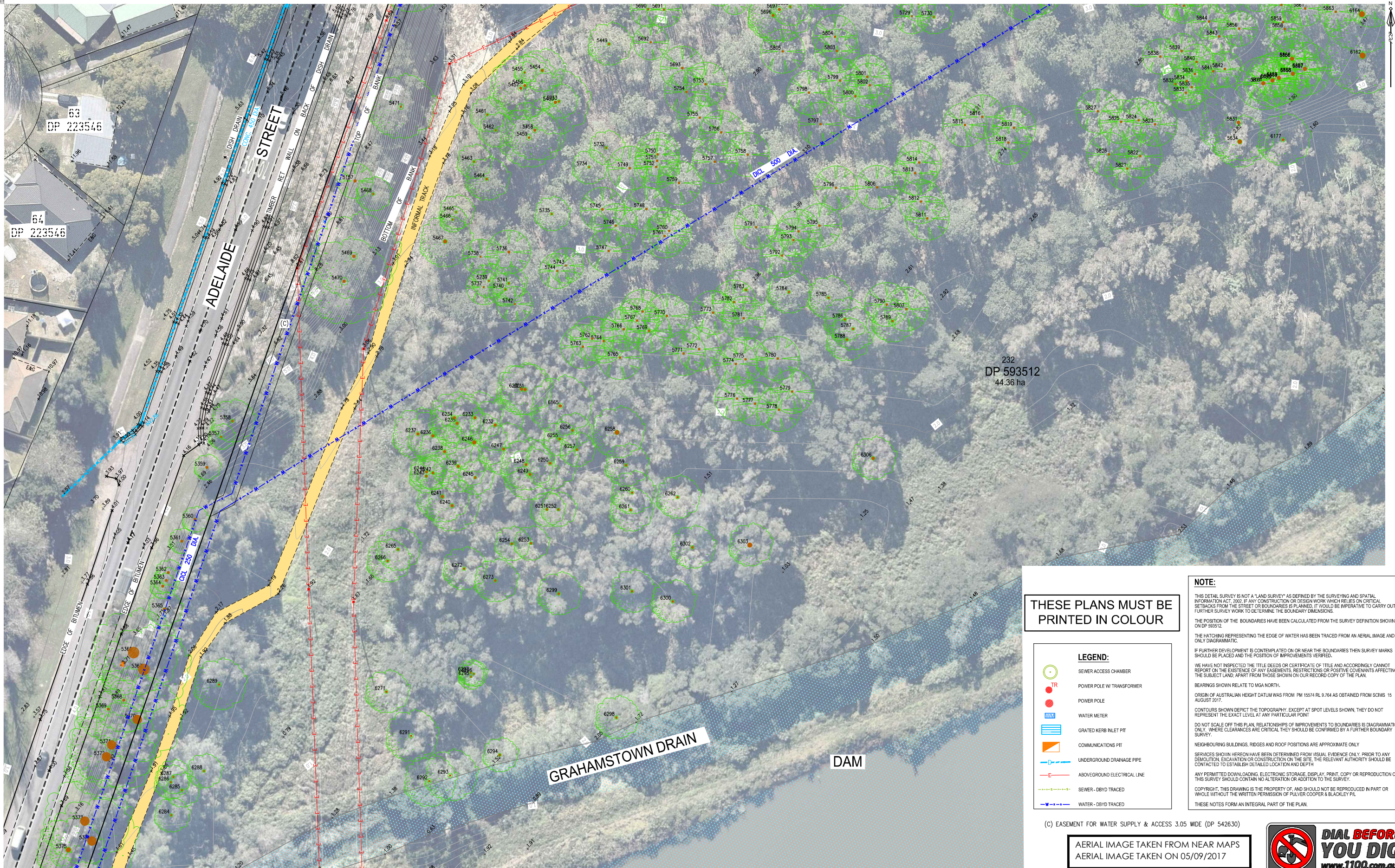
NO. OF SHEETS	1
---------------	---

0

SHEET No.

3





THESE PLANS MUST BE
PRINTED IN COLOUR

- LEGEND:**
- SEWER ACCESS CHAMBER
 - POWER POLE W/ TRANSFORMER
 - POWER POLE
 - WATER METER
 - GRADED KERB INLET PIT
 - COMMUNICATIONS PIT
 - UNDERGROUND DRAINAGE PIPE
 - ABOVEGROUND ELECTRICAL LINE
 - SEWER - DBYD TRACED
 - WATER - DBYD TRACED

NOTE:

THIS DETAIL SURVEY IS NOT A "LAND SURVEY" AS DEFINED BY THE SURVEYING AND SPATIAL INFORMATION ACT, 2002. IF ANY CONSTRUCTION OR DESIGN WORK WHICH RELIES ON CRITICAL SETBACKS FROM THE STREET OR BOUNDARIES IS PLANNED, IT WOULD BE IMPERATIVE TO CARRY OUT FURTHER SURVEY WORK TO DETERMINE THE BOUNDARY DIMENSIONS.

THE POSITION OF THE BOUNDARIES HAVE BEEN CALCULATED FROM THE SURVEY DEFINITION SHOWN ON DP 593512.

THE HATCHING REPRESENTING THE EDGE OF WATER HAS BEEN TRACED FROM AN AERIAL IMAGE AND IS ONLY DIAGRAMMATIC.

IF FURTHER DEVELOPMENT IS CONTEMPLATED ON OR NEAR THE BOUNDARIES THEN SURVEY MARKS SHOULD BE PLACED AND THE POSITION OF IMPROVEMENTS VERIFIED.

WE HAVE NOT INSPECTED THE TITLE DEEDS OR CERTIFICATE OF TITLE AND ACCORDINGLY CANNOT REPORT ON THE EXISTENCE OF ANY EASEMENTS, RESTRICTIONS OR POSITIVE COVENANTS AFFECTING THE SUBJECT LAND, APART FROM THOSE SHOWN ON OUR RECORD COPY OF THE PLAN.

BEARINGS SHOWN RELATE TO MGA NORTH.

ORIGIN OF AUSTRALIAN HEIGHT DATUM WAS FROM PM 15574 RL 9.764 AS OBTAINED FROM SCIMS 15 AUGUST 2017.

CONTOURS SHOWN DEPICT THE TOPOGRAPHY, EXCEPT AT SPOT LEVELS SHOWN, THEY DO NOT REPRESENT THE EXACT LEVEL AT ANY PARTICULAR POINT.

DO NOT SCALE OFF THIS PLAN. RELATIONSHIPS OF IMPROVEMENTS TO BOUNDARIES IS DIAGRAMMATIC ONLY. WHERE CLEARANCES ARE CRITICAL THEY SHOULD BE CONFIRMED BY A FURTHER BOUNDARY SURVEY.

NEIGHBOURING BUILDINGS, RIDGES AND ROOF POSITIONS ARE APPROXIMATE ONLY.

SERVICES SHOWN HEREON HAVE BEEN DETERMINED FROM VISUAL EVIDENCE ONLY. PRIOR TO ANY DEMOLITION, EXCAVATION OR CONSTRUCTION ON THE SITE, THE RELEVANT AUTHORITY SHOULD BE CONTACTED TO ESTABLISH DETAILED LOCATION AND DEPTH.

ANY PERMITTED DOWNLOADING, ELECTRONIC STORAGE, DISPLAY, PRINT, COPY OR REPRODUCTION OF THIS SURVEY SHOULD CONTAIN NO ALTERATION OR ADDITION TO THE SURVEY.

COPYRIGHT, THIS DRAWING IS THE PROPERTY OF, AND SHOULD NOT BE REPRODUCED IN PART OR WHOLE WITHOUT THE WRITTEN PERMISSION OF PULVER COOPER & BLACKLEY PTY LTD.

THESE NOTES FORM AN INTEGRAL PART OF THE PLAN.

(C) EASEMENT FOR WATER SUPPLY & ACCESS 3.05 WIDE (DP 542630)

AERIAL IMAGE TAKEN FROM NEAR MAPS
AERIAL IMAGE TAKEN ON 05/09/2017



INSTRUCTION NUMBER: 16/146			
FILE ID: 143163			
SURVEYED: SY & LH			
DESIGNED: -			
DRAWN: SY & LH			
CHECKED: TS			
DATUM: AHD			
CONTOUR INTERVAL: 0.2m			
INITIAL ISSUE		LH	31/08/17
NO.	DESCRIPTION	DRAWN	DATE

pcb
PULVER COOPER & BLACKLEY

SURVEYORS TOWN PLANNERS
CIVIL ENGINEERS PROJECT MANAGERS

COPYRIGHT ©
Pulver Cooper & Blackley Pty Ltd.
Other than as permitted by the Copyright Act 1968,
reproduction, publication or use without prior written
permission of Pulver, Cooper & Blackley Pty Ltd. is
prohibited.

P.O. Box 729
NEWCASTLE 2300
Ph (02) 4929 3882
Fax (02) 4926 2214

98 LAWES STREET
EAST MAITLAND 2323
Ph (02) 4934 3026
Fax (02) 4934 3027

PLAN:
PARTIAL DETAIL SURVEY PLAN OF
LOT 232 DP 593512
251 ADELAIDE STREET,
RAYMOND TERRACE
LGA : PORT STEPHENS

CLIENT:
SKUBITHIA PTY LTD &
LIONDARI
HOLDINGS PTY LTD

No. OF SHEETS
10
SHEET No.
9

Horizontal Scale 1:400 (A1)
1:800 (A3)

NOTE:

THIS DETAIL SURVEY IS NOT A "LAND SURVEY" AS DEFINED BY THE SURVEYING AND SPATIAL INFORMATION ACT, 2002. IF ANY CONSTRUCTION OR DESIGN WORK WHICH RELIES ON CRITICAL SETBACKS FROM THE STREET OR BOUNDARIES IS PLANNED, IT WOULD BE IMPERATIVE TO CARRY OUT FURTHER SURVEY WORK TO DETERMINE THE BOUNDARY DIMENSIONS.

THE POSITION OF THE BOUNDARIES HAVE BEEN CALCULATED FROM THE SURVEY DEFINITION SHOWN ON DP 593512.

THE HATCHING REPRESENTING THE EDGE OF WATER HAS BEEN TRACED FROM AN AERIAL IMAGE AND IS ONLY DIAGRAMMATIC.

IF FURTHER DEVELOPMENT IS CONTEMPLATED ON OR NEAR THE BOUNDARIES THEN SURVEY MARKS SHOULD BE PLACED AND THE POSITION OF IMPROVEMENTS VERIFIED.

WE HAVE NOT INSPECTED THE TITLE DEEDS OR CERTIFICATE OF TITLE AND ACCORDINGLY CANNOT REPORT ON THE EXISTENCE OF ANY EASEMENTS, RESTRICTIONS OR POSITIVE COVENANTS AFFECTING THE SUBJECT LAND, APART FROM THOSE SHOWN ON OUR RECORD COPY OF THE PLAN.

BEARINGS SHOWN RELATE TO MGA NORTH.

ORIGIN OF AUSTRALIAN HEIGHT DATUM WAS FROM PM 15574 RL 9.764 AS OBTAINED FROM SCIMS 15 AUGUST 2017.

CONTOURS SHOWN DEPICT THE TOPOGRAPHY, EXCEPT AT SPOT LEVELS SHOWN, THEY DO NOT REPRESENT THE EXACT LEVEL AT ANY PARTICULAR POINT.

DO NOT SCALE OFF THIS PLAN, RELATIONSHIPS OF IMPROVEMENTS TO BOUNDARIES IS DIAGRAMMATIC ONLY. WHERE CLEARANCES ARE CRITICAL THEY SHOULD BE CONFIRMED BY A FURTHER BOUNDARY SURVEY.

NEIGHBOURING BUILDINGS, RIDGES AND ROOF POSITIONS ARE APPROXIMATE ONLY.

SERVICES SHOWN HEREON HAVE BEEN DETERMINED FROM VISUAL EVIDENCE ONLY. PRIOR TO ANY DEMOLITION, EXCAVATION OR CONSTRUCTION ON THE SITE, THE RELEVANT AUTHORITY SHOULD BE CONTACTED TO ESTABLISH DETAILED LOCATION AND DEPTH.

ANY PERMITTED DOWNLOADING, ELECTRONIC STORAGE, DISPLAY, PRINT, COPY OR REPRODUCTION OF THIS SURVEY SHOULD CONTAIN NO ALTERATION OR ADDITION TO THE SURVEY.

COPYRIGHT: THIS DRAWING IS THE PROPERTY OF, AND SHOULD NOT BE REPRODUCED IN PART OR WHOLE WITHOUT THE WRITTEN PERMISSION OF PULVER COOPER & BLACKLEY P/L.

THESE NOTES FORM AN INTEGRAL PART OF THE PLAN.

LEGEND:

- SEWER ACCESS CHAMBER
- POWER POLE W/ TRANSFORMER
- POWER POLE
- WATER METER
- GRATED KERB INLET PIT
- COMMUNICATIONS PIT
- UNDERGROUND DRAINAGE PIPE
- ABOVEGROUND ELECTRICAL LINE
- SEWER - DBYD TRACED
- WATER - DBYD TRACED

AERIAL IMAGE TAKEN FROM NEAR MAPS
AERIAL IMAGE TAKEN ON 05/09/2017



THESE PLANS MUST BE
PRINTED IN COLOUR

